

CYBERSECURITY ASSESSMENT



CONTACT

infosec@ironbow.com

At this moment, you know that highly motivated cyber criminals are trying to breach your network. With millions of events across your enterprise everyday, how can you possibly know where? It's frustrating – and a daunting situation to manage.

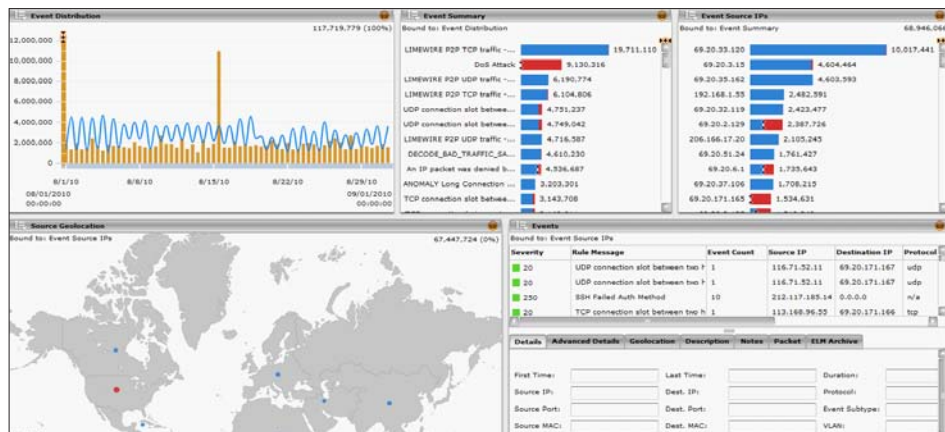
GET REAL TIME INFORMATION AND TARGETED IMPROVEMENT IN 35 DAYS

Iron Bow Technologies can help by showing you a new approach that makes your information security more manageable, proactive and targeted. By performing an Iron Bow Cybersecurity Assessment, our information security experts can help you identify vulnerabilities almost immediately and develop remediation strategies that will improve your posture going forward.

Our Information Security Practice is lead by professionals that have real world experience applying and managing IA programs for federal and commercial customers.

To perform the cybersecurity assessment, our team leverages McAfee Enterprise Security Manager to gather data for evaluation by our information security team. NitroView ESM is an analysis and anomaly detection tool that collects information from all sources across the network and provides a real time assessment to improve your cybersecurity posture.

The assessment period is 35 days. During this time you will get real time information allowing you to address threats immediately. Upon completion you will get a report that details the results of the analysis; remediation recommendations developed by our Information Security Practice; and proof-of-concept of McAfee ESM in your environment.



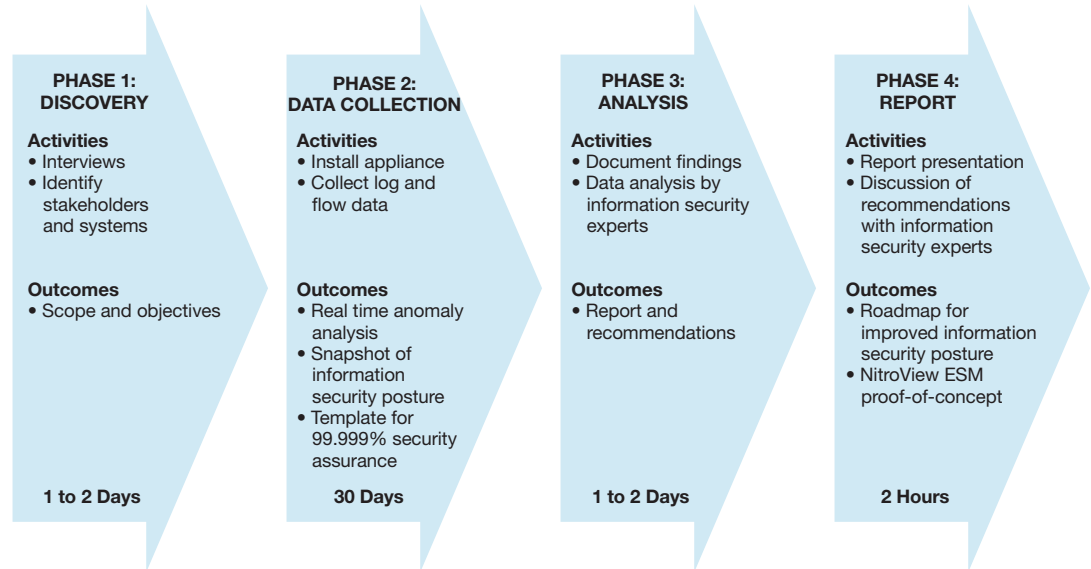
Real time data from across your enterprise speeds your ability to detect and respond to threats.

BENEFITS

- Identification of trouble areas within the physical IT infrastructure
- Identification of misused and breached elements within the network
- Actionable data that will identify points to free up improperly used bandwidth
- Expert analysis of information security posture
- Remediation recommendations developed by experienced information security professionals
- Proof-of-concept of a comprehensive assessment tool that speeds the ability to see and respond to threats across the enterprise

Access our experts to develop a customized information security roadmap.

ASSESSMENT METHODOLOGY



QUALIFYING SYSTEMS

NitroView ESM can monitor any device targeted by the assessment team and stakeholders that supports:

- Syslog (firewall, router, switch, server, database, application and more)
- SNMP (firewall, router, switch, server, database, application and more)
- Flow (Cisco, Juniper, Brocade and native McAfee devices and more)

THE IRON BOW INFORMATION SECURITY PRACTICE

Led by seasoned information security experts with hands-on experience implementing federal and commercial cybersecurity initiatives, the Iron Bow team helps identify and implement solutions that accurately align with missions, budgets and existing infrastructures to meet your risk profile. Our vendor-agnostic approach avoids cost, vulnerability and interoperability issues that can result from a force-fit solution.

Whether you need a point product or a multi-faceted solution, look to us to design, deploy or manage:

- Compliance
- Cross Domain Solutions
- Data Leakage Prevention (DLP)
- Encryption
- Endpoint Security
- Security Information Management
- Unified Threat Management
- Vulnerability Assessments and Management

To see how Iron Bow can streamline and fortify your information security, contact our experts at infosec@ironbow.com.